



**Electrolux**  
PROFESSIONAL

**Modular Cooking Range Line  
900XP Worktop with Water Column  
and Liter Counter, 200 mm**

ITEM # \_\_\_\_\_

MODEL # \_\_\_\_\_

NAME # \_\_\_\_\_

SIS # \_\_\_\_\_

AIA # \_\_\_\_\_



206378 (WTNWTCT9E)

Ambient WorkTop with water column and liter counter, 1/4 module

**Short Form Specification**

Item No. \_\_\_\_\_

200 mm wide top unit with mounted water column, fitted with electronic liter-counter. Easy operation, LED display allows to constantly monitor the water output. Unit to be installed on bases, bridging supports or cantilever systems. Equipped with liter-counter. One piece pressed worktop in 2 mm thick stainless steel provides a heavy duty work surface under any load.

**Main Features**

- 200 mm wide top unit with mounted water column, fitted with electronic liter-counter.
- Easy operation, LED display allows to constantly monitor the water output.
- Unit features cold water tap.
- Unit to be mounted on open base cupboards, bridging supports or cantilever systems.
- Can be installed on neutral base, refrigerated base, cantilever and bridge installation.
- Top configuration allows installation on ambient base only (not possible to install on refrigerated nor freezer base).

**Construction**

- Model has right-angled side edges to allow flush fitting joints between units, eliminating gaps and possible dirt traps.
- All exterior panels in Stainless Steel with Scotch Brite finishing.
- Stainless steel top provides a heavy duty work surface under any load.

APPROVAL: \_\_\_\_\_

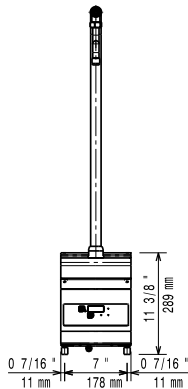


Experience the Excellence  
[www.electroluxprofessional.com](http://www.electroluxprofessional.com)

**Optional Accessories**

- Junction sealing kit PNC 206086
- Support for bridge type installation, 800mm PNC 206137
- Support for bridge type installation, 1000mm PNC 206138
- Support for bridge type installation, 1200mm PNC 206139
- Support for bridge type installation, 1400mm PNC 206140
- Support for bridge type installation, 1600mm PNC 206141
- Support for bridge type installation, 400mm PNC 206154
- Water column with swivel arm (water column extension not included) PNC 206289
- Water column extension for 900 line PNC 206290
- Chimney upstand, 200mm PNC 206302
- Side handrail-right/left hand (900XP) PNC 216044
- Frontal handrail, 400mm PNC 216046
- Frontal handrail, 800mm PNC 216047
- Frontal handrail, 1200mm PNC 216049
- Frontal handrail, 1600mm PNC 216050
- Large handrail - portioning shelf, 400mm PNC 216185
- Large handrail - portioning shelf, 800mm PNC 216186
- 2 side covering panels for top appliances PNC 216278

Front


**Electric**
**Supply voltage:**

206378 (WTNWTCT9E) 230 V/1 ph/50/60 Hz

**Water:**
**Water cold/hot pipe size** 3/4"

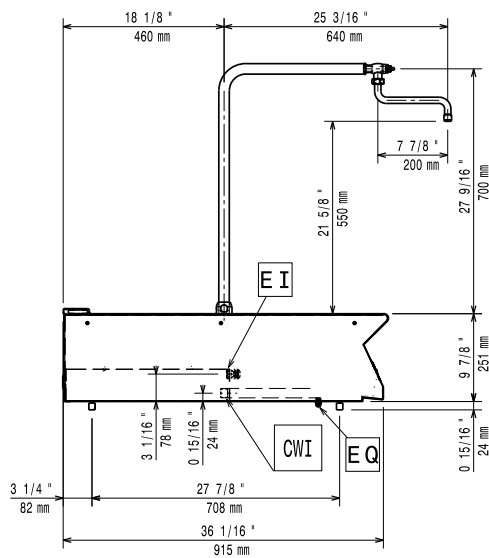
**Key Information:**
**External dimensions, Width:** 200 mm

**External dimensions, Depth:** 930 mm

**External dimensions, Height:** 250 mm

**Net weight:** 13 kg

Side



CWI1 = Cold Water inlet 1 (cleaning)

EI = Electrical inlet (power)

Top

